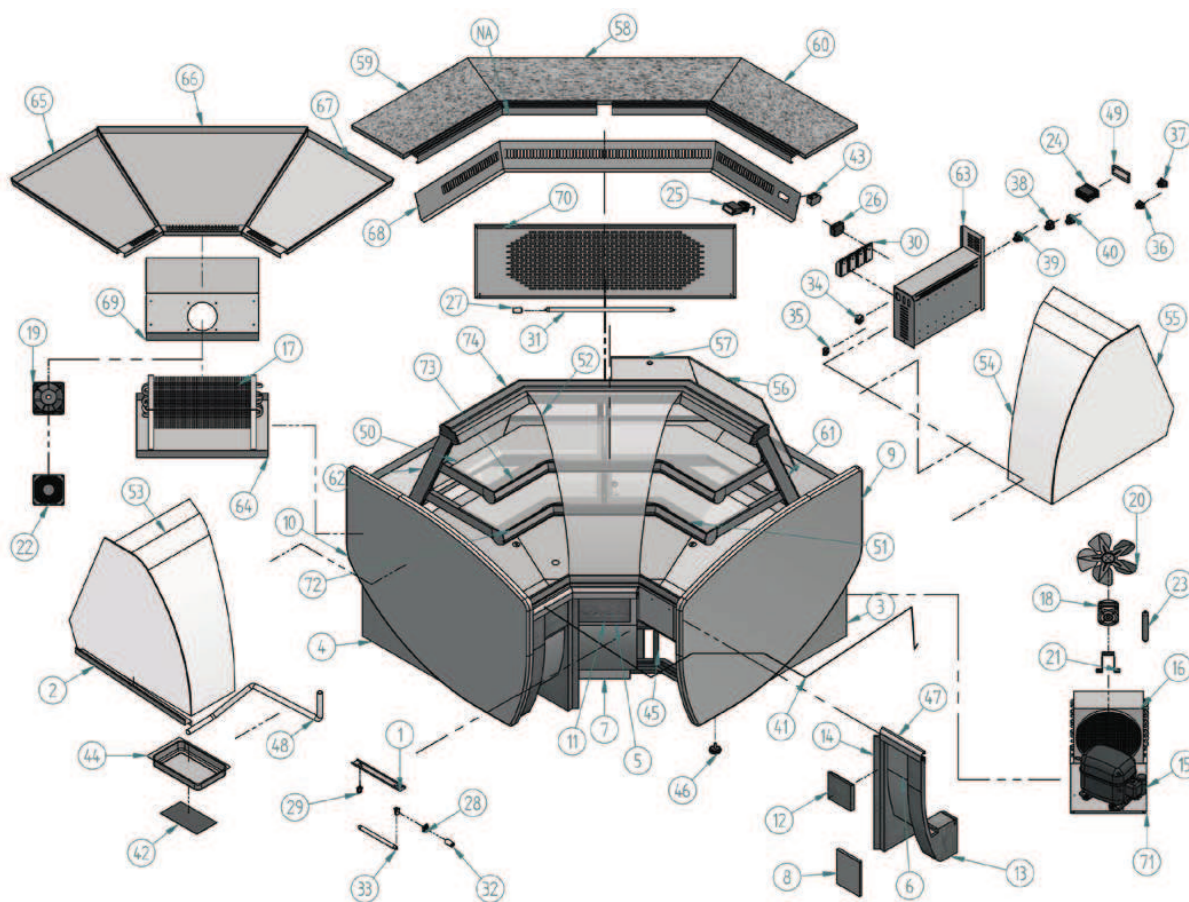


## VVF AC 90



| Nº | Código     | Descripción                      | Cantidad |
|----|------------|----------------------------------|----------|
| 1  | 10EC5095   | SOPORTE ILUMINACION              | 4        |
| 2  | 10NL1355   | SOPORTE CRISTAL NEOLA            | 2        |
| 3  | 10VN1356   | COSTADO DCH INF CAJA VENUS       | 1        |
| 4  | 10VN1357   | COSTADO IZQ INF CAJA VENUS       | 1        |
| 5  | 10VNAC9051 | DEC. FRONTAL CENTR VENUS A C 90° | 1        |
| 6  | 10VNAC9051 | DEC. FRONTAL LAT VENUS A C 90°   | 2        |
| 7  | 10VNAC9058 | ZOCALO CENTR VENUS A C 90°       | 1        |
| 8  | 10VNAC9059 | ZOCALO LAT VENUS A C 90°         | 2        |
| 9  | 203X146    | COSTADO DCH VENUS                | 1        |
| 10 | 203X147    | COSTADO IZQ VENUS                | 1        |
| 11 | 203X151    | FRENTE INF CENTR A C 90° VENUS   | 1        |
| 12 | 203X153    | FRENTE INF LAT A C 90° VENUS     | 2        |
| 13 | 203X154    | PILAR LATERAL VENUS              | 2        |
| 14 | 203X156    | PILAR LATERAL A C VENUS          | 2        |
| 15 | 301006     | COMPRESOR 3/8 134A               | 1        |
| 16 | 302X09     | CONDENSADOR 9X3 CON BAFLE        | 1        |
| 17 | 303V40     | EVAP RF 13 / MF 900              | 1        |
| 18 | 304X01     | MOTOVENT. 10W (H-88 D-250)       | 1        |
| 19 | 304X03     | MOTOVENT. EBM W2K121-AA01-01     | 1        |
| 20 | 304X07     | PALA 250 mm                      | 1        |
| 21 | 304X10     | PIE GRANDE (84 mm)               | 1        |
| 22 | 304X11     | REJILLA MOTOVENT.EBM LZ 33.1     | 1        |
| 23 | 305X02     | FILTRO 30 GR. 1/4X1/4 R-134a     | 1        |
| 24 | 308X02     | MICROPROC. 2 RELE 12 v           | 1        |
| 25 | 308X06     | TERMOMETRO ANALOGICO DE BULBO    | 1        |

| Nº | Código  | Descripción                     | Cantidad |
|----|---------|---------------------------------|----------|
| 26 | 308X12  | TRANSFORMADOR (220/12V)         | 1        |
| 27 | 401X07  | CEBADOR 4-80 W FS-11            | 2        |
| 28 | 401X10  | PORTA-CEBADOR (REF.16/L)        | 6        |
| 29 | 401X11  | PORTA-TUBOS 13W ESP. REF.265    | 12       |
| 30 | 401X13  | REACTANCIA 13W (EENH 2022)      | 4        |
| 31 | 401X19  | TUBO FLUIDR. 13W L.D.           | 2        |
| 32 | 401X33  | CEBADOR 4-22 W FS-22            | 4        |
| 33 | 401X34  | TUBO FLUIDR. 6W L.D. 212 mm     | 4        |
| 34 | 402X26  | CAJA HEMBRA 12 VIAS             | 1        |
| 35 | 402X28  | CAJA 1-0480703-0 HEMBRA 4 VIAS  | 1        |
| 36 | 402X31  | CONECTOR MACHO E-5010           | 1        |
| 37 | 402X32  | CONECTOR HEMBRA E-5012          | 1        |
| 38 | 405X02  | INTERRUPTOR NARANJA ILUMINACION | 1        |
| 39 | 405X03  | INTERRUPTOR ROJO RESISTENCIA    | 1        |
| 40 | 405X04  | INTERRUPTOR GENERAL             | 1        |
| 41 | 406X14  | RESIST. ANTI-VAHO MASTER A C 90 | 1        |
| 42 | 406X32  | PLACA RESIT. 200 w THERMOST.    | 1        |
| 43 | 407X14  | FILTRO MONOFAS 250 V 3A FEH-32  | 1        |
| 44 | 501X21  | BANDEJA EVAP. AN/VII 398 x 190  | 1        |
| 45 | 505X66  | RODAPIE STAR A C 90 ° R         | 1        |
| 46 | 506X26  | REGULADOR M10 (BASE M12)        | 5        |
| 47 | 601X129 | PERFIL REF - 2273 PLATA         | 1        |
| 48 | 602X20  | GOMA DESAGUE 18 x 22 mm         | 1        |
| 49 | 603X83  | PROTECTOR FRONTAL MICRO         | 1        |
| 50 | 604Y137 | BAZAR SUP MASTER A C 90°        | 2        |

| Nº | Código   | Descripción                          | Cantidad |
|----|----------|--------------------------------------|----------|
| 51 | 604V138  | BAZAR INF MASTER A C 90°             | 2        |
| 52 | 604V152  | CRISTAL CURVO CENTRAL DF (D)         | 1        |
| 53 | 604V153  | CRISTAL CURVO IZQ DF (E)             | 1        |
| 54 | 604V154  | CRISTAL CURVO DCH DF (F)             | 1        |
| 55 | 604V236  | COSTADO CRISTAL NEOLA/VENUS          | 2        |
| 56 | 605V40   | PUERTA A C 90° 421 x 490 x 500       | 2        |
| 57 | 605V41   | PUERTA A C 90° 316 x 405 x 500       | 2        |
| 58 | 606V20   | ENCIMERA CENTRAL MASTER V A C 90°    | 1        |
| 59 | 606V21   | ENCIMERA DCH MASTER V A C 90°        | 1        |
| 60 | 606V22   | ENCIMERA IZQ MASTER V A C 90°        | 1        |
| 61 | BRAAMV   | BRAZO ABIERTO MASTER                 | 1        |
| 62 | BRACHV   | BRAZO CERRADO MASTER                 | 3        |
| 63 | E43T1313 | C/MANDOS REFRIGERACION               | 1        |
| 64 | E43T1337 | BANDEJA DESAGUE                      | 1        |
| 65 | E64A1010 | BANDEJA EXP IZQ MASTER V A C 90°     | 1        |
| 66 | E64A1011 | BANDEJA EXP CENTRAL MASTER V A C 90° | 1        |
| 67 | E64A101B | BANDEJA EXP DCH MASTER V A C 90°     | 1        |
| 68 | E64TA21  | DUELA MASTER V A C 90° R             | 1        |
| 69 | E64TA26  | PROTECT EVAP MASTER V A A 90°        | 1        |
| 70 | E64TAC14 | REJILLA TRASERA MASTER A C 90°       | 1        |
| 71 | ESTANDAR | BANCADA ESTANDAR                     | 1        |
| 72 | PMPVAC90 | PERFIL PANTALLA INFERIOR             | 1        |
| 73 | PMPVAC90 | PERFIL PANTALLA MEDIA                | 1        |
| 74 | PPSVAC90 | PERFIL PANTALLA SUPERIOR             | 1        |

