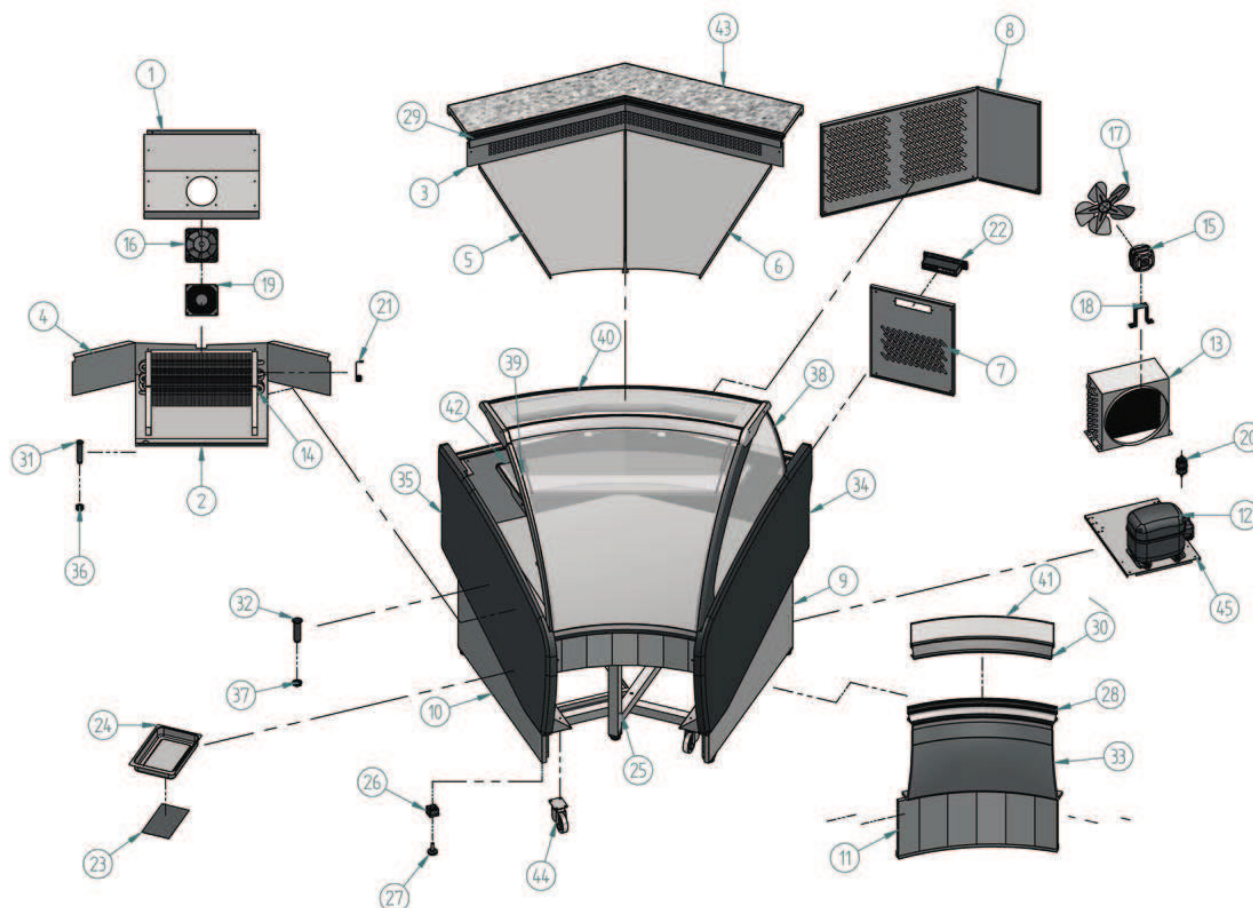


VLBAC 45 R



| Nº | Código | Descripción | Cantidad |
|----|-----------|--------------------------------|----------|
| 1 | 10ARAA955 | PROTECT EVAP ARIES A A 90° | 1 |
| 2 | 10ARAA956 | BAND EVAP ARIES A A 90° | 1 |
| 3 | 10ARAC431 | DUJELA ARIES A C 45° | 1 |
| 4 | 10ARAC433 | CIERRE EVAPORADOR TRASERO | 1 |
| 5 | 10ARAC938 | BAND IZQ ARIES A C 90° | 1 |
| 6 | 10ARAC941 | BAND DCH ARIES A C 90° | 1 |
| 7 | 10ARAC975 | C/MANDOS ARIES A C 90° / 45° R | 1 |
| 8 | 10ARAC977 | REJILLA TRAS ARIES A C 45° | 1 |
| 9 | 10LB1560 | COST DEC DCH LIBRA | 1 |
| 10 | 10LB1561 | COST DEC IZQ LIBRA | 1 |
| 11 | 10LBAC487 | DECOR.ZOCALO LIBRA AC45 | 1 |
| 12 | 301D10 | COMPRESOR 1/3 R 404 A | 1 |
| 13 | 302X10 | CONDENSADOR 9X4 CON BAFLE | 1 |
| 14 | 303V40 | EVAP RF 13 / MF 900 | 1 |
| 15 | 304X01 | MOTOVENT. 10W IH-88 D-250 | 1 |

| Nº | Código | Descripción | Cantidad |
|----|---------|-------------------------------------|----------|
| 16 | 304X03 | MOTOVENT. EBM WZK121-AA01-01 | 1 |
| 17 | 304X07 | PALA 250 mm | 1 |
| 18 | 304X10 | PIE GRANDE (84 mm) | 1 |
| 19 | 304X11 | REJILLA MOTOVENT.EBM LZ 33.1 | 1 |
| 20 | 305X03 | DESHIDRATADOR CERAMICO | 1 |
| 21 | 308X04 | SONDA MICROPRCC. NTC | 1 |
| 22 | 308X28 | MICRO 3 RELE 0.2A JZUL M. RETRO | 1 |
| 23 | 406X32 | PLACA RESIT. 200 w TERMOST. | 1 |
| 24 | 501X21 | BANDEJA EVAP. ANVIT 398 x 190 | 1 |
| 25 | 505X102 | RODAPIE ARIES AC 45° R | 1 |
| 26 | 506X35 | PATA REG. 40 x 40 | 6 |
| 27 | 506X86 | REGULADOR MT M10 | 6 |
| 28 | 601X166 | PERFIL REF.10640 PLATA GRAT.REP. 6m | 1 |
| 29 | 601X90 | PERFIL REF.-2438 PLATA (5.4 MI) | 1 |
| 30 | 602V140 | PERFIL TABICA ARIES AC 90° | 1 |

| Nº | Código | Descripción | Cantidad |
|----|---------|--------------------------------------|----------|
| 31 | 603X15 | DESAGUE 1/2 LARGO (COMPLETO) | 1 |
| 32 | 603X16 | DESAGUE 3/4 | 1 |
| 33 | 603X196 | DECORACION FRONTAL ARIES-LIBRA AC45° | 1 |
| 34 | 603X203 | COSTADO ABS LIBRA DERECHO | 1 |
| 35 | 603X204 | COSTADO ABS LIBRA IZQUIERDO | 1 |
| 36 | 603X73 | TUERCA 1/2 | 1 |
| 37 | 603X74 | TUERCA 3/4 GAS | 1 |
| 38 | 604V199 | TERMOPAN 4+6+4 COSTADO ARIES | 2 |
| 39 | 604V204 | CRISTAL FRONTAL ARIES AC 45° | 1 |
| 40 | 604V208 | ENCIMERA CRISTAL ARIES AC 45° | 1 |
| 41 | 604V215 | TABICA CRISTAL ARIES AC 90° | 1 |
| 42 | 604V234 | ESTANTE CRISTAL ARIES AC 45° | 1 |
| 43 | 606S05 | ENCIMERA QUARZ ARIES AC 90° | 1 |
| 44 | 705X22 | RUEDA GOMA GRIS 80 mm | 4 |
| 45 | VITBANC | BANCADA VITBANC | 1 |

