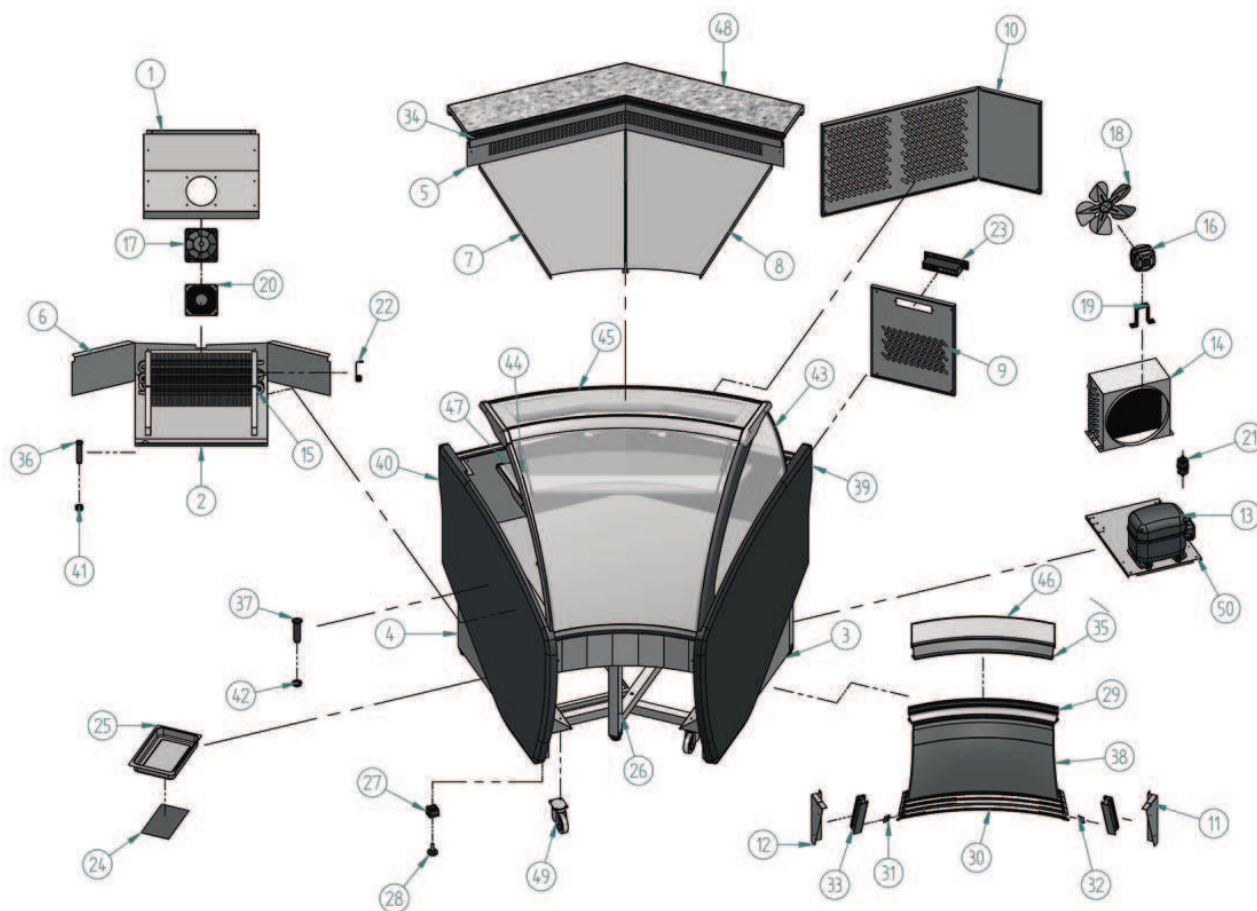


VARAC 45 R



| Nº | Código | Descripción | Cantidad |
|----|-----------|--------------------------------|----------|
| 1 | 10ARAA955 | PROTECT EVAP ARIES A A 90° | 1 |
| 2 | 10ARAA956 | BAND EVAP ARIES A A 90° | 1 |
| 3 | 10ARAA960 | COST DEH DEC ARIES A A / A C | 1 |
| 4 | 10ARAA961 | COST IZQ DEC ARIES A A / A C | 1 |
| 5 | 10ARAC431 | DUELA ARIES A C 45° | 1 |
| 6 | 10ARAC433 | CIERRE EVAPORADOR TRASERO | 1 |
| 7 | 10ARAC938 | BAND IZQ ARIES A C 90° | 1 |
| 8 | 10ARAC941 | BAND DEH ARIES A C 90° | 1 |
| 9 | 10ARAC975 | C/MANDOS ARIES A C 90° / 45° R | 1 |
| 10 | 10ARAC977 | REJILLA TRAS ARIES A C 45° | 1 |
| 11 | 10ARH1571 | SOP DEH LAMAS ARIES | 1 |
| 12 | 10ARH1572 | SOP IZQ LAMAS ARIES | 1 |
| 13 | 301010 | COMPRESOR 1/3 R 404 A | 1 |
| 14 | 302X10 | CONDENSADOR 9X4 CON BAFLE | 1 |
| 15 | 303V40 | EVAP RF 13 / MF 900 | 1 |
| 16 | 304X01 | MOTOVENT. 10w IH-88 D-250I | 1 |
| 17 | 304X03 | MOTOVENT. EBM W2K121-AA01-01 | 1 |

| Nº | Código | Descripción | Cantidad |
|----|---------|-------------------------------------|----------|
| 18 | 304X07 | PALA 250 mm | 1 |
| 19 | 304X10 | PIE GRANDE (84 mm) | 1 |
| 20 | 304X11 | REJILLA MOTOVENT.EBM LZ 33.1 | 1 |
| 21 | 305X03 | DESHIDRATADOR CERAMICO | 1 |
| 22 | 308X04 | SONDA MICROPROC. NTC | 1 |
| 23 | 308X28 | MICRO 3 RELE DIAZUL M.RETRO | 1 |
| 24 | 406X32 | PLACA RESIT. 200 w TERMOST. | 1 |
| 25 | 501X21 | BANDEJA EVAP. AN/VIT 398 x 190 | 1 |
| 26 | 505X102 | RODAPIE ARIES AC 45° R | 1 |
| 27 | 506X35 | PATA REG. 40 x 40 | 6 |
| 28 | 506x86 | REGULADOR MT M10 | 6 |
| 29 | 601X166 | PERFIL REF.10640 PLATA GRAT.REP. 6m | 1 |
| 30 | 601X167 | PERF. LAMA REF. 2271 PLATA | 1 |
| 31 | 601X168 | SOPORTE LAMA IZDA TC2271 | 5 |
| 32 | 601X169 | SOPORTE LAMA DEHA TC2271 | 5 |
| 33 | 601X170 | PERF. LAMA REF. 4553 PLATA | 2 |
| 34 | 601X90 | PERFIL REF-2438 PLATA (54 MI) | 1 |

| Nº | Código | Descripción | Cantidad |
|----|---------|--------------------------------------|----------|
| 35 | 602V140 | PERFIL TABICA ARIES AC 90° | 1 |
| 36 | 603X15 | DESAGUE 1/2 LARGO (COMPLETO) | 1 |
| 37 | 603X16 | DESAGUE 3/4 | 1 |
| 38 | 603X196 | DECORACION FRONTAL ARIES-LIBRA AC45° | 1 |
| 39 | 603X197 | COSTADO ABS ARIES DERECHO | 1 |
| 40 | 603X198 | COSTADO ABS ARIES IZQUIERDO | 1 |
| 41 | 603X73 | TUERCA 1/2 | 1 |
| 42 | 603X74 | TUERCA 3/4 GAS | 1 |
| 43 | 604V199 | TERMOPAN 4+6+4 COSTADO ARIES | 2 |
| 44 | 604V204 | CRISTAL FRONTAL ARIES AC 45° | 1 |
| 45 | 604V208 | ENCIMERA CRISTAL ARIES AC 45° | 1 |
| 46 | 604V215 | TABICA CRISTAL ARIES AC 90° | 1 |
| 47 | 604V234 | ESTANTE CRISTAL ARIES AC 45° | 1 |
| 48 | 606S05 | ENCIMERA QUARZ ARIES AC 90° | 1 |
| 49 | 705X22 | RUEDA GOMA GRIS 80 mm | 4 |
| 50 | VITBAN. | BANDEJA VITBAN. | 1 |

