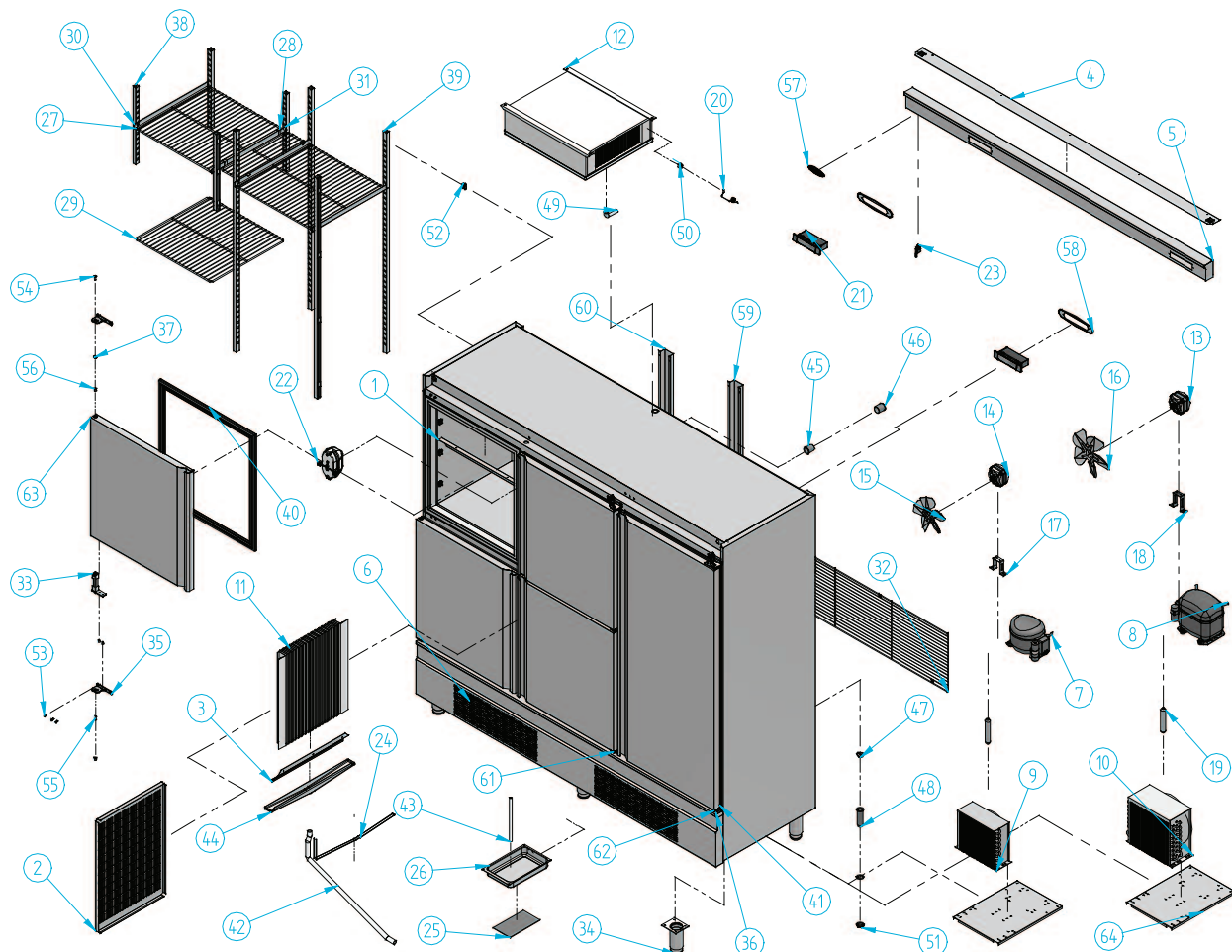


## ANDP 1605 TF/G



| Nº | Código   | Descripción                   | Cantidad |
|----|----------|-------------------------------|----------|
| 1  | 10AN1051 | REJILLA VENT EVAPORADOR AN    | 3        |
| 2  | 10AN1052 | REJILLA EVAPORADOR OPTO DP    | 1        |
| 3  | 10AN1055 | BAFLE EVAPORADOR OPTO DP      | 1        |
| 4  | 10AN1658 | REJILLA VENT C/MANDOS AN 1600 | 1        |
| 5  | 10AN1668 | C/MANDOS AN 1600 OPTO         | 1        |
| 6  | 10AN1680 | REJILLA VENT OEL AN 1600      | 1        |
| 7  | 301D01   | COMPRESOR 1/8 R134a           | 1        |
| 8  | 301D08   | COMPRESOR 5/8 134A            | 1        |
| 9  | 302X03   | CONDENSADOR 8X2 CON BAFLE     | 1        |
| 10 | 302X10   | CONDENSADOR 9X4 CON BAFLE     | 1        |
| 11 | 303A01   | EVAPORADOR AN 1000 OPTO-DP    | 1        |
| 12 | 303T05   | EVAPORADOR AN 1600            | 1        |
| 13 | 304X01   | MOTOVENT. 10W IH-88 D-250I    | 1        |
| 14 | 304X02   | MOTOVENT. 5W,IH-75 D-200I     | 1        |
| 15 | 304X06   | PALA 200 mm                   | 1        |
| 16 | 304X07   | PALA 250 mm                   | 1        |
| 17 | 304X09   | PIE MEDIANO (72 mm)           | 1        |
| 18 | 304X10   | PIE GRANDE (84 mm)            | 1        |
| 19 | 305X02   | FILTRO 30 GR. 1/4X1/4 R-134a  | 2        |
| 20 | 308X04   | SONDA MICROPROC. NTC          | 3        |
| 21 | 308X11   | MICROPROC. 2 RELE             | 2        |
| 22 | 401X06   | APLIQUE OVAL C/P REF. 1400 G  | 2        |

| Nº | Código | Descripción                      | Cantidad |
|----|--------|----------------------------------|----------|
| 23 | 405X10 | MICRO DE PUERTA                  | 3        |
| 24 | 406X01 | RESIST. ANTI-VAHO DP             | 1        |
| 25 | 406X32 | PLACA RESIT. 200 w TERMOST.      | 1        |
| 26 | 501X29 | BANDEJA EVAP. AN/VIT 398 x 190   | 1        |
| 27 | 502X02 | PARRILLA AN 1000 PLAST.          | 7        |
| 28 | 502X21 | SUPLEM. PARRILLA AN              | 4        |
| 29 | 502X29 | PARRILLA AN 1000 INOX.           | 2        |
| 30 | 503X12 | GUIA PARRILLA AN 1000 ( 521 mm ) | 9        |
| 31 | 503X17 | GUIA PARRILLA AN 1000 ( 521 mm ) | 9        |
| 32 | 504X13 | REJILLA INF. LL COND. AN 1600    | 1        |
| 33 | 506X03 | BISAGRA PUERTA                   | 6        |
| 34 | 506X42 | PATA REG. ARMARIOS 2 PULGADAS    | 6        |
| 35 | 506X54 | SOPORTE BISAGRAS IZQUIERDO       | 3        |
| 36 | 506X55 | SOPORTE BISAGRA DERECHO          | 5        |
| 37 | 506X56 | TUERCA ANCLAJE                   | 2        |
| 38 | 601X45 | SOPORTE PARRILLA BAJO 01         | 8        |
| 39 | 601X50 | SOPORTE PARRILLA BAJO 03         | 8        |
| 40 | 602A01 | BURLETE AN CHICA 631 x 665       | 4        |
| 41 | 602A02 | BURLETE GRANDE AN 631 X 1396     | 1        |
| 42 | 602X20 | GOMA DESAGUE 18 x 22 mm          | 1        |
| 43 | 602X29 | GOMA DESAGUE 14 x 10 mm          | 1        |
| 44 | 603X03 | BANDEJA DESAGUE EVAP. 580x50     | 1        |

| Nº | Código  | Descripción                        | Cantidad |
|----|---------|------------------------------------|----------|
| 45 | 603X124 | PASA-MUROS INTERIOR                | 2        |
| 46 | 603X125 | PASA-MUROS EXTERIOR                | 2        |
| 47 | 603X127 | TAPON PARA DESAGUE 3/4             | 2        |
| 48 | 603X16  | DESAGUE 3/4                        | 2        |
| 49 | 603X33  | PIPETA                             | 1        |
| 50 | 603X40  | SOPORTE BULBO                      | 1        |
| 51 | 603X74  | TUERCA 3/4 GAS                     | 2        |
| 52 | 603X77  | SOPORTE "U" DESMONTABLE            | 56       |
| 53 | 701X28  | TORNILLO. 4,8x16 DIN 7982 NIQUEL   | 36       |
| 54 | 701X62  | TORNILLO M6x20 ULS IDIAM.13,6I A-2 | 2        |
| 55 | 701X64  | ESPARRAGO M6 x 25 DIN 913 A-2      | 2        |
| 56 | 704X03  | TUERCA REMACHABLE M6x9x14,5 AL/H   | 4        |
| 57 | 901X57  | MARCA INFRICO RELIEVE 115x40 ROJO  | 1        |
| 58 | 901X58  | PROTECT C/MANDOS FIG. A PLATA      | 2        |
| 59 | AN1038  | PROTECTOR ASPIRACION AN            | 1        |
| 60 | AN1038  | PROTECTOR ASPIRACION AN            | 1        |
| 61 | PUE1CAN | PUERTA DCH CHICA AN                | 2        |
| 62 | PUE6BAN | PUERTA DCH GRANDE AN               | 1        |
| 63 | PUE1CAN | PUERTA IZQ CHICA AN                | 2        |
| 64 | VITBANC | BANCADA VITBANC                    | 2        |

