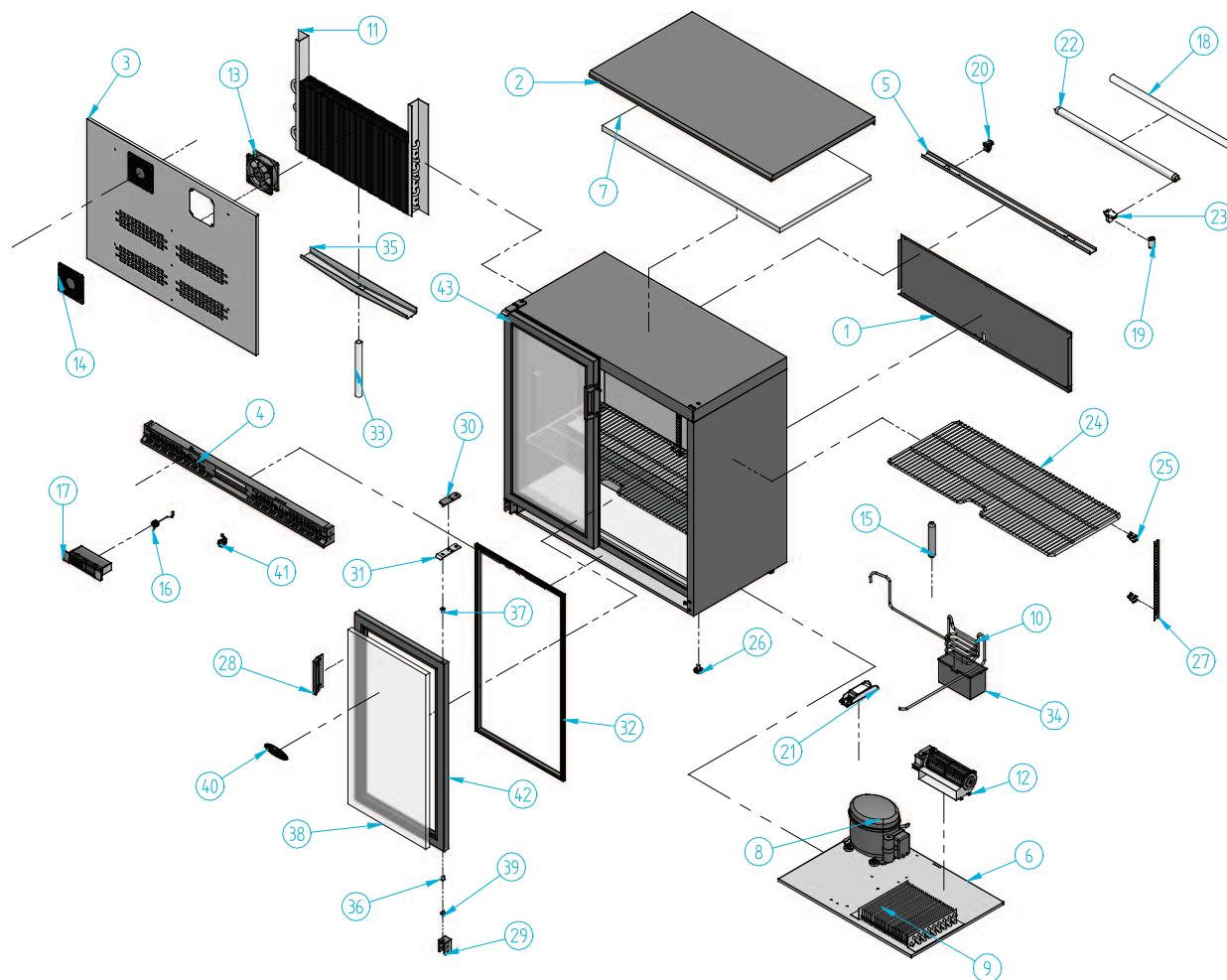


EV 250 PD



| Nº | Código | Descripción | Cantidad |
|----|-----------|-------------------------------------|----------|
| 1 | 10NEV2506 | TAPA TRASERA EV 250 | 1 |
| 2 | 10NEV2508 | TAPA TECHO EV 250 | 1 |
| 3 | 10NEV2529 | PROTECT. EVAP. EV 250 | 1 |
| 4 | 10NEV2553 | E/MANDOS EV 250 | 1 |
| 5 | 10NEV2555 | PANT TUBO FLUOR EV 250 PT | 1 |
| 6 | 10NEV3557 | BANCADA EV 350 PT | 1 |
| 7 | 202X39 | POLIEST.875X450X20 D.20 | 1 |
| 8 | 301003sp4 | COMPRESOR GL60TG 1/5 R134a | 1 |
| 9 | 302X13 | CONDENSADOR EV 350 PT | 1 |
| 10 | 302XEV | SERPENTIN EV 150 | 1 |
| 11 | 303A11 | EVAP.GRAV. EV 250 PS | 1 |
| 12 | 304X25 | TURB. TANG0206/0018A22-2524-16 | 1 |
| 13 | 304X26 | MOTOVENT. PAPST 4650 N CABLE LZ 120 | 2 |
| 14 | 304X27 | REJILLA MOTOVENT. EBM LZ30-5 | 2 |
| 15 | 305X02 | FILTRO 30 GR. 1/4X1/4 R-134a | 1 |

| Nº | Código | Descripción | Cantidad |
|----|--------|-----------------------------------|----------|
| 16 | 308X04 | SONDA MICROPROC. NTC | 1 |
| 17 | 308X23 | MICROPROC. 1 RELE XW20L | 1 |
| 18 | 401X01 | AKO TUBO 18 w | 1 |
| 19 | 401X07 | CEBADOR 4-80 W FS-11 | 1 |
| 20 | 401X12 | PORTA-TUBOS (REF. 249/TS) | 1 |
| 21 | 401X14 | REACTANCIA 18-20W IECNH 2022 | 1 |
| 22 | 401X20 | TUBO FLUOR. 18 w L.D. 590 mm 26 D | 1 |
| 23 | 401X28 | PORTA-TUBOS +PI/CEBADOR 249/ITER | 1 |
| 24 | 502X28 | PARRILLA EV 250 PD | 2 |
| 25 | 506x08 | SOPORTE CREAMALLERA | 10 |
| 26 | 506x24 | REGULADOR M10 | 4 |
| 27 | 506x68 | CREMALLERA INOX | 5 |
| 28 | 506x71 | TIRADOR PUERTA | 2 |
| 29 | 506x74 | SOPORTE BISAGRA ARMARIO EV | 2 |
| 30 | 506x79 | SOPORTE BISAGRA SUPERIOR | 2 |

| Nº | Código | Descripción | Cantidad |
|----|----------|-----------------------------------|----------|
| 31 | 506x85 | SOPORTE TECHO EXT. EV ZINC. NEGRO | 2 |
| 32 | 602E40 | BURLETE EV150PS 785x425 | 2 |
| 33 | 602X20 | GOMA DESAGUE 18 x 22 mm | 1 |
| 34 | 603X119 | PROT.MICROP.NEGRO IGNI-FUGO | 1 |
| 35 | 603X120 | BANDEJA DESAGUE EVAP 840x50mm | 1 |
| 36 | 603X58 | TAPON CIEGO REF-001 EBH | 2 |
| 37 | 603X68 | TAPON REFORZADO REF-002 EBH | 2 |
| 38 | 604E07 | TERMOPAN NZ2/3 6-10-4 385x745 | 2 |
| 39 | 701X93 | PERNO PUERTA EV | 2 |
| 40 | 901X57 | MARCA INFRICO RELIEVE 115x40 ROJO | 1 |
| 41 | 950A054 | CERRADURA DE BUZÓN 135 R-14 | 2 |
| 42 | PIUEVP25 | PUERTA EXP VERT 250 | 1 |
| 43 | PIUEVP25 | PUERTA EXP VERT 250 | 1 |

