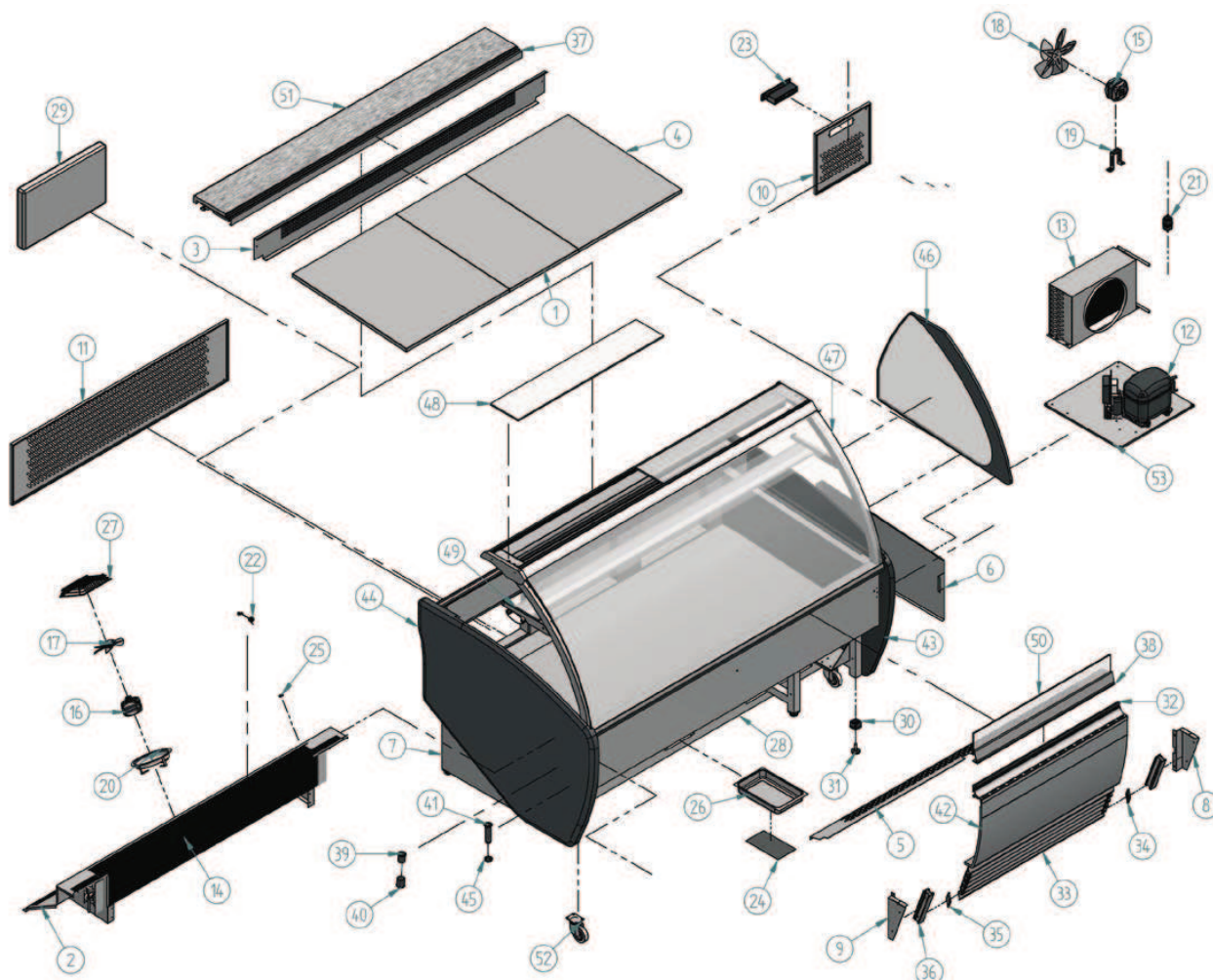


VAR 2000 R



| Nº | Código | Descripción | Cantidad |
|----|-----------|-------------------------------|----------|
| 1 | 10AR1541 | BAND CENT ARIES 1500 | 1 |
| 2 | 10AR1555 | PROTECTOR EVAP VRM 2000 | 1 |
| 3 | 10AR2031 | DUELA DEFLEC AIRE 2000 | 1 |
| 4 | 10AR2040 | BANDEJA EXPOSIC LATERAL 2000 | 2 |
| 5 | 10AR2044 | DEFLECTOR DEL. 2000 | 1 |
| 6 | 10ARH1560 | COST DCH DEC ARIES | 1 |
| 7 | 10ARH1561 | COST IZQ DEC ARIES | 1 |
| 8 | 10ARH1571 | SOP DCH LAMAS ARIES | 2 |
| 9 | 10ARH1572 | SOP IZQ LAMAS ARIES | 2 |
| 10 | 10ARH1575 | C/MANDOS ARIES R | 1 |
| 11 | 10ARH2076 | REJILLA TRAS ARIES 2000 | 1 |
| 12 | 301E11 | COMPRESOR 5/8 R 404 | 1 |
| 13 | 302X17 | CONDENS. 1X4 CON BAFLE LA.400 | 1 |
| 14 | 303V68 | EVAPORADOR ARIES 2000 R | 1 |
| 15 | 304X01 | MOTOV. 10w IH-88 D-250I | 1 |
| 16 | 304X02B | MOTOV. 5w AROIH-75 D-154I | 1 |
| 17 | 304X05 | PALA 154 mm | 1 |
| 18 | 304X07 | PALA 250 mm | 1 |

| Nº | Código | Descripción | Cantidad |
|----|---------|-------------------------------------|----------|
| 19 | 304X10 | PIE GRANDE 184 mm | 1 |
| 20 | 304X12 | ARO 51161-2-4037 PALA 154 mm | 1 |
| 21 | 305X03 | DESHIDRATADOR CERAMICO | 1 |
| 22 | 308X04 | SONDA MICROPROC. NTC | 1 |
| 23 | 308X28 | MICRO 3 RELE OJAZUL M.RETRO | 1 |
| 24 | 406X32 | PLACA RESIT. 200 w TERMOST. | 1 |
| 25 | 407X03 | PASACABLE 9 mm | 1 |
| 26 | 501X21 | BANDEJA EVAP. ANVIT 398 x 190 | 1 |
| 27 | 504X35 | REJILLA EVAPORADOR STAR | 1 |
| 28 | 505X97 | RODAPIE ARIES 2000 R | 1 |
| 29 | 506X105 | PUERTA ARIES | 3 |
| 30 | 506X35 | PATA REG. 40 x 40 | 6 |
| 31 | 506X86 | REGULADOR MT M10 | 6 |
| 32 | 601X166 | PERFIL REF.10640 PLATA GRAT.REP. 6m | 2 |
| 33 | 601X167 | PERF. LAMA REF. 2271 PLATA | 12 |
| 34 | 601X168 | SOPORTE LAMA IZDA. TC2271 | 10 |
| 35 | 601X169 | SOPORTE LAMA DCHA. TC2271 | 10 |
| 36 | 601X170 | PERF. LAMA REF. 4553 PLATA | 4 |

| Nº | Código | Descripción | Cantidad |
|----|---------|-------------------------------------|----------|
| 37 | 601X90 | PERFIL REF.-2438 PLATA (5.4 MI) | 1 |
| 38 | 602V138 | PERFIL TABICA ARIES RECTO RAAL 7037 | 2 |
| 39 | 603X124 | PASA-MUROS INTERIOR | 1 |
| 40 | 603X125 | PASA-MUROS EXTERIOR | 1 |
| 41 | 603X16 | DESAGUE 3/4 | 1 |
| 42 | 603X193 | DEC FRONTAL ARIES-LIBRA L. 950 | 2 |
| 43 | 603X197 | COSTADO ABS ARIES DERECHO | 1 |
| 44 | 603X198 | COSTADO ABS ARIES IZQUIERDO | 1 |
| 45 | 603X74 | TUERCA 3/4 GAS | 1 |
| 46 | 604V199 | TERMOPAN 4+6+4 COSTADO ARIES | 2 |
| 47 | 604V202 | CRISTAL FRONTAL ARIES 2000 | 1 |
| 48 | 604V205 | ENCIMERA CRISTAL ARIES 1000 | 2 |
| 49 | 604V211 | ESTANTE CRISTAL ARIES 2000 | 1 |
| 50 | 604V212 | TABICA CRISTAL ARIES 1000 | 2 |
| 51 | 606S03 | ENCIMERA QUARZ ARIES 2000 | 1 |
| 52 | 705X22 | RUEDA GOMA GRIS 80 mm | 4 |
| 53 | AG14M1 | BANCADA AGN 1400 BT | 1 |

