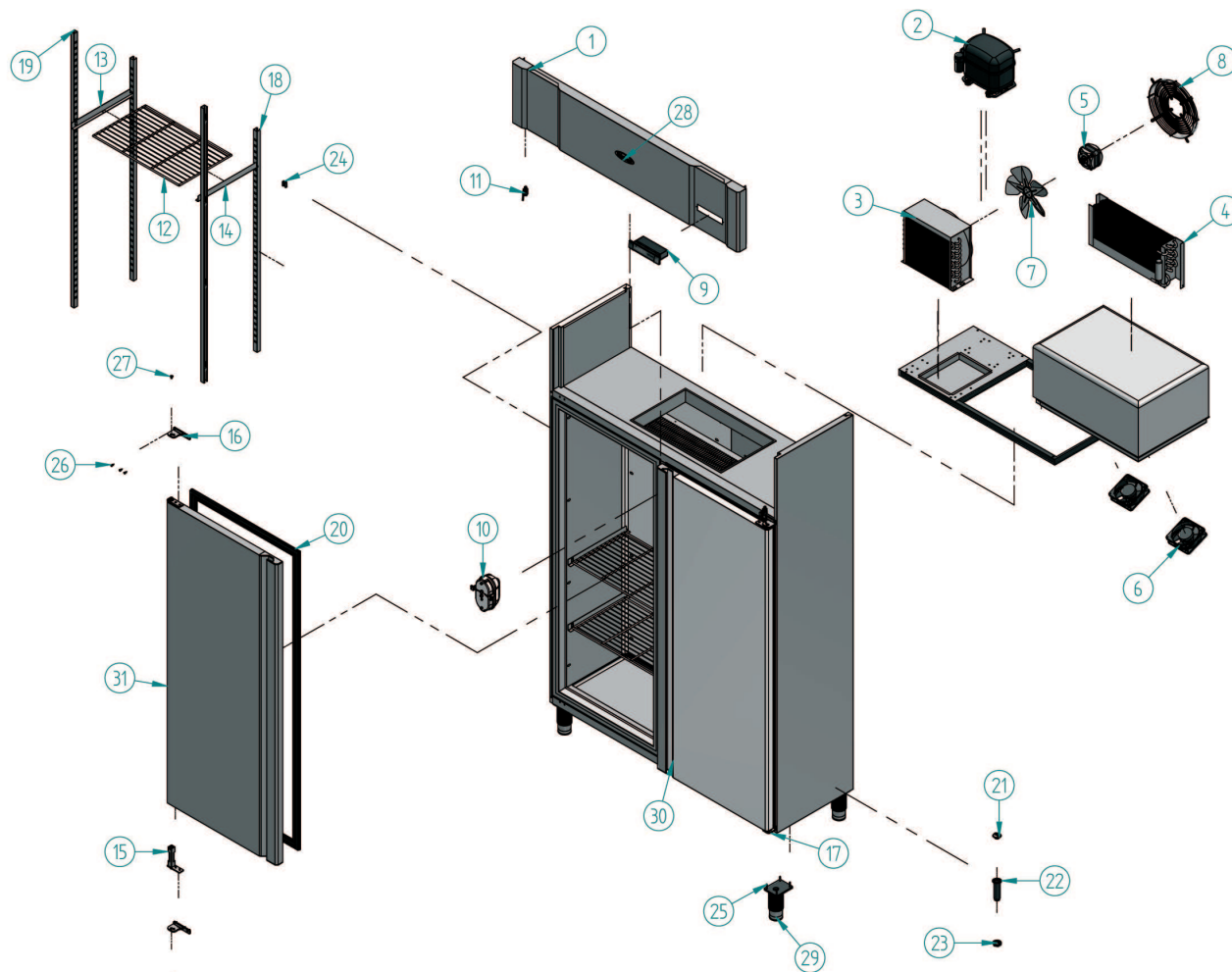


AGB 802



| Nº | Código | Descripción | Cantidad |
|----|----------|-------------------------------|----------|
| 1 | 10AG1480 | CUADRO MANDOS | 1 |
| 2 | 301D06 | COMPRESOR 3/8 134A | 1 |
| 3 | 302X09 | CONDENSADOR 9X3 CON BAFLE | 1 |
| 4 | 303A28 | EVAP AGN 1400 M / AGN 700 R | 1 |
| 5 | 304X01 | MOTOVENT. 10w IH-88 D-250I | 1 |
| 6 | 304X03 | MOTOVENT. EBM W2K121-AA01-01 | 2 |
| 7 | 304X07 | PALA 250 mm | 1 |
| 8 | 304X38 | REJILLA MONOBLOCK PALA 250 mm | 1 |
| 9 | 308X11 | MICROPROC. 2 RELE | 1 |
| 10 | 401X06 | APLIQUE OVAL C/P REF. 1400 G | 1 |
| 11 | 405X10 | MICRO DE PUERTA | 2 |

| Nº | Código | Descripción | Cantidad |
|----|---------|-------------------------------|----------|
| 12 | 502X12 | PARRILLA GASTRONORM 1/1 | 6 |
| 13 | 503X58 | GUIA 01 365 m/m AGN 400 / 800 | 6 |
| 14 | 503X59 | GUIA 02 365 m/m AGN 400 / 800 | 6 |
| 15 | 506X03 | BISAGRA PUERTA | 4 |
| 16 | 506X54 | SOPORTE BISAGRAS IZQUIERDO | 2 |
| 17 | 506X55 | SOPORTE BISAGRAS DERECHO | 2 |
| 18 | 601K01 | SOPORTE PARRILLA AGN K&T | 4 |
| 19 | 601X56 | SOPORTE PARRILLA | 4 |
| 20 | 602A05 | BURLETE AGN 1542 x 631 | 2 |
| 21 | 603X127 | TAPON PARA DESAGUE 3/4 | 2 |
| 22 | 603X16 | DESAGUE 3/4 | 2 |

| Nº | Código | Descripción | Cantidad |
|----|-------------|------------------------------------|----------|
| 23 | 603X74 | TUERCA 3/4 GAS | 2 |
| 24 | 603X77 | SOPORTE "U" DESMONTABLE | 28 |
| 25 | 701X128 | T.AUTOBL5,5 x 32 mm DIN 7504K ZINC | 20 |
| 26 | 701X28 | TORNILLO. 4,8x16 DIN 7982 NIQUEL | 20 |
| 27 | 701X63 | TORNILLO.M6x10 ULS (DIAM.13.6) A-2 | 4 |
| 28 | 901X57 | MARCA RELIEVE 115x40 | 1 |
| 29 | PATAN506X42 | PATA REG. ARMARIOS 2" | 4 |
| 30 | PUEDGAG | PUERTA DCHA GRANDE AGN | 1 |
| 31 | PUEIGAG | PUERTA IZQDA GRANDE AGN | 1 |

